

KARIBAN

REFERENCE : K6147

SIZES : XS_S_M_L_XL_XXL_3XL_4XL_5XL

COMPOSITION :

Main fabric : Polyester taffeta 230T AC coating - 75 For both middle front + middle back + outside collar + back loop 100% polyester

Fabric : 4 Way Stretch 2 layers Softshell (Plain weave/Micropolar fleece) Polyester - 280 For front and back side panels, sleeves, inside collar and under front tab

Padding : Polyester polyfil - 120 For middle front and middle back panels 100%polyester

Lining : Polyester 210T - 55 For lining and pocket sack 100% polyester

WEIGHT :

Main fabric : 75 gsm

Fabric : 280 gsm

Padding : 120 gsm

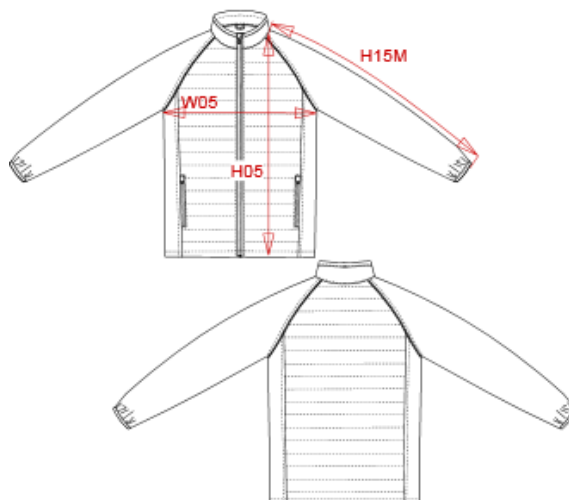
Lining : 55 gsm

TECHNICAL DETAIL :

Water repellant 3-4

ARTICLE WEIGHT :

520 gr/pc



| DESCRIPTION | |
|---------------------|---|
| Français : | Veste DayToDay bi-matière Unisex |
| English : | Unisex dual-fabric DayToDay jacket |
| Nederlands : | Jas DayToDay in twee stoffen unisex |
| Deutsch : | Bi-Material Unisex-Jacke DayToDay |
| Español : | Chaqueta Daytoday dos-materiales unisex |
| Italiano : | Giacca DayToDay unisex bimateriale |
| Português : | Blusão bi-matéria DayToDay |

| MEASUREMENT | | | | | | | | | |
|--|-------|----|-------|-------|-------|-----|-------|-------|-------|
| Description | XS | S | M | L | XL | XXL | 3XL | 4XL | 5XL |
| W05 (M) 1/2 largeur poitrine à 1.5cm de l'emmanchure / 1/2 chest width at 1.5cm below armhole | 49 | 52 | 55 | 58 | 61 | 64 | 67 | 70 | 73 |
| H05 (M) Hauteur totale / Total height | 70 | 72 | 74 | 76 | 78 | 80 | 82 | 84 | 86 |
| H15M (M) Longueur manche longue raglan / Long raglan sleeve length | 75,25 | 77 | 78,75 | 80,50 | 82,25 | 84 | 85,75 | 87,50 | 89,25 |

| CARE LABEL | | | | |
|------------|--|--|--|--|
| | | | | |

dimensions des marquages devant



♀♂

REF : K6147NGR



♀♂

REF : K6147NJA