

# KARIBAN

**REFERENCE :** K466

**SIZES :** XS\_S\_M\_L\_XL\_XXL\_3XL\_4XL

**COMPOSITION :**

Main fabric : Brushed Combed Cotton / Polyester fleece 80/20 - 280 80%cotton / 20%polyester

Fabric 1 : Cotton single jersey - 180 For hood lining, neckline property tape. 100%cotton

**WEIGHT :**

Main fabric : 280 gsm

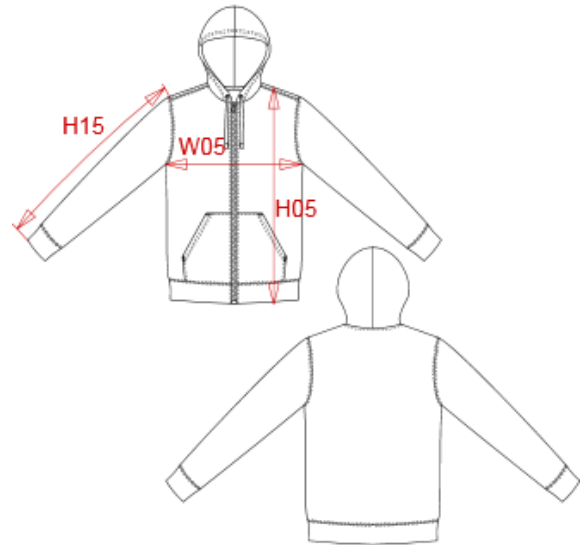
Fabric 1 : 180 gsm

**FABRIC CONSTRUCTION AND FINISHING :**

Regular

**ARTICLE WEIGHT :**

540 gr/pc



DESCRIPTION									
<b>Français :</b> Sweat-shirt zippé capuche contrastée									
<b>English :</b> Contrast hooded full zip sweatshirt									
<b>Nederlands :</b> Sweater met rits en capuchon in contrasterende kleur									
<b>Deutsch :</b> Sweatshirt mit Reißverschluss und Kapuze in Kontrastfarbe									
<b>Español :</b> Sudadera con capucha y cremallera contrastada									
<b>Italiano :</b> Felpa con cappuccio a contrasto full zip									
<b>Português :</b> Sweatshirt com fecho e capuz em contraste									

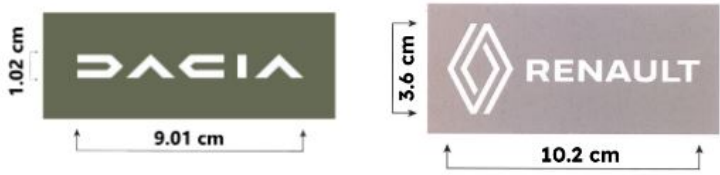
MEASUREMENT										
Description	XS	S	M	L	XL	XXL	3XL	4XL		
<b>H05</b> Hauteur totale avec BC / Total height with rib	67,50	69,50	71,50	73,50	75,50	77,50	79,50	82,25		
<b>W05</b> 1/2 largeur poitrine / 1/2 chest width	49	52	55	58	61	64	67	71		
<b>H15</b> Longueur manche avec BC / Sleeve length with rib	60	62	64	66	68	70	72	74		

CARE LABEL				



REF : K466NJA

dimensions des marquages devant



♀♂



REF : K466NGR

